



GEORGIA WATER PLANNING

Lower Flint-Ochlockonee

Working Lands and Water

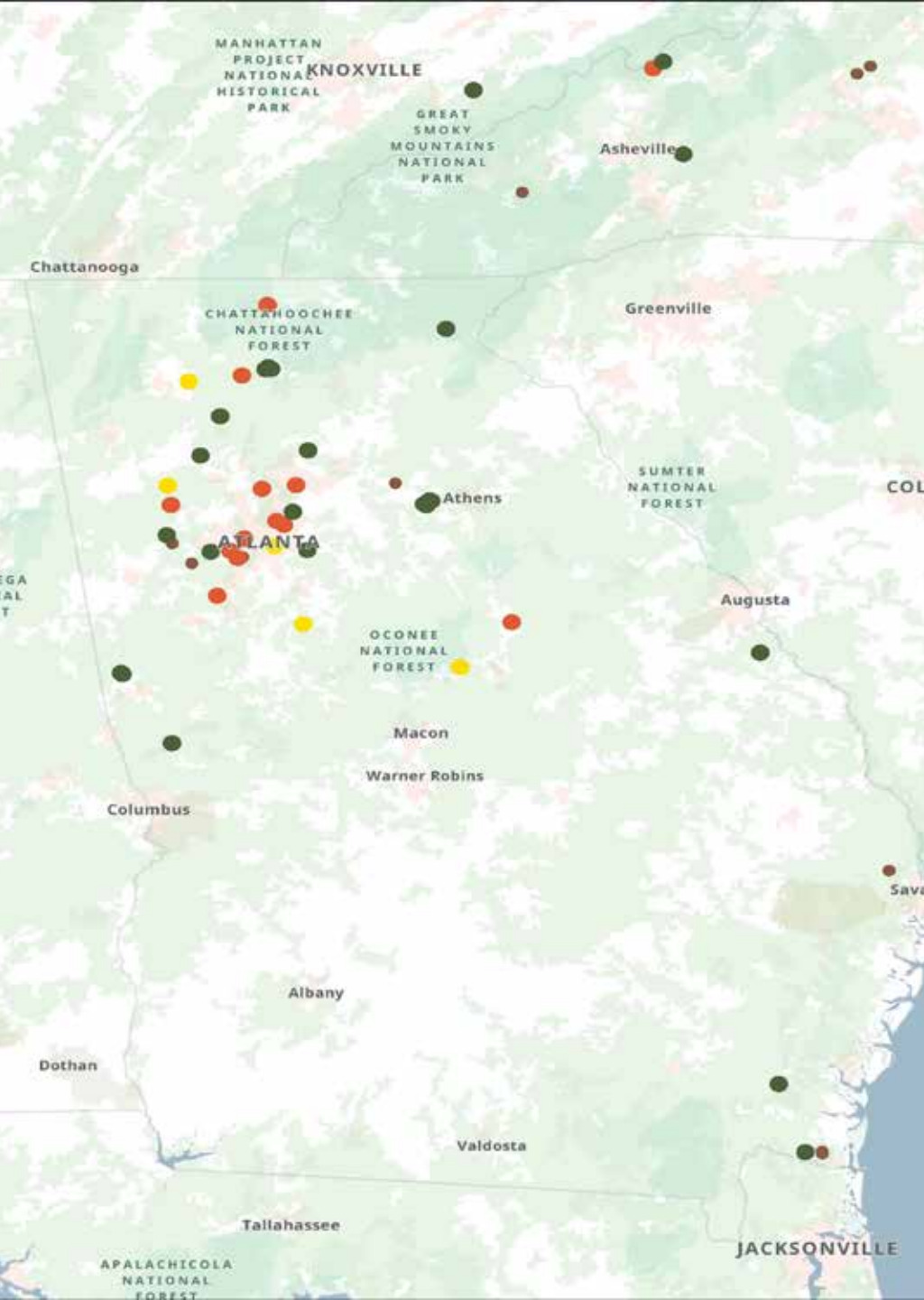


Working Lands, Water, and Changing Landscapes in the ACF Basin

Panelists

- **Keith Ray**, Executive Director of the Southeast Trust for Parks and Land—bringing a land protection and working lands perspective grounded in ecology and conservation practice.
- **Katherine Moore**, President of the Georgia Conservancy—offering deep experience in land-use planning, policy, and statewide conservation strategy.
- **Steven Brantley**, Associate Scientist from the Jones Center at Ichauway—whose research focuses on how forest management shapes water systems and ecosystem resilience.
- **Scott Thackston**, Forester with the Georgia Forestry Commission—working at the implementation level on forestry best management practices and water quality protection across the state.





Keith Ray
Executive Director





Georgia Now and Forever

Katherine Moore
President



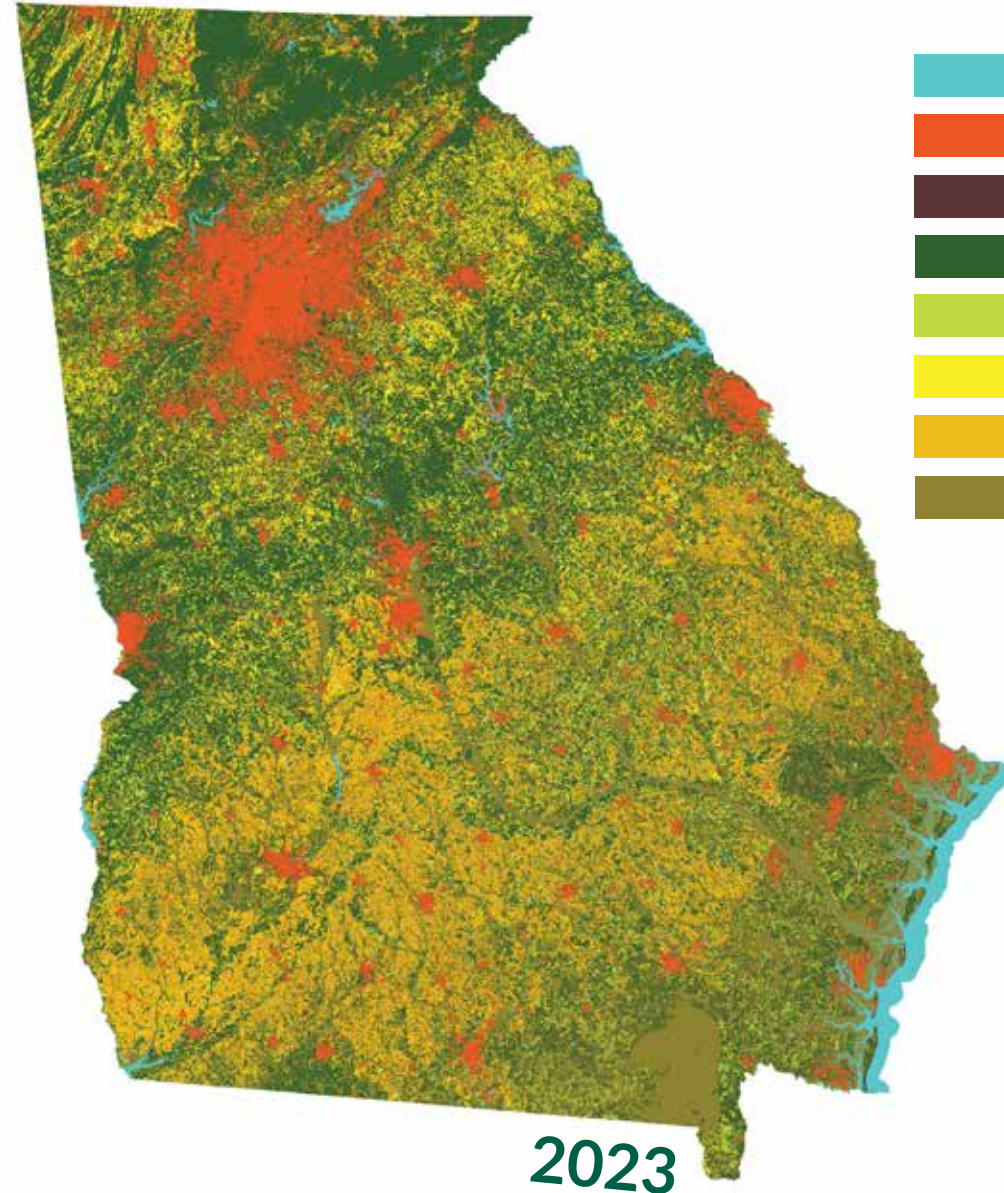


WHY PROTECT LAND?

We rely on our land for everything.

- Jobs & employment
- Housing & people
- Utilities & infrastructure
- Ecological services & habitat
- Outdoor recreation & natural resources

But our land is a limited resource.



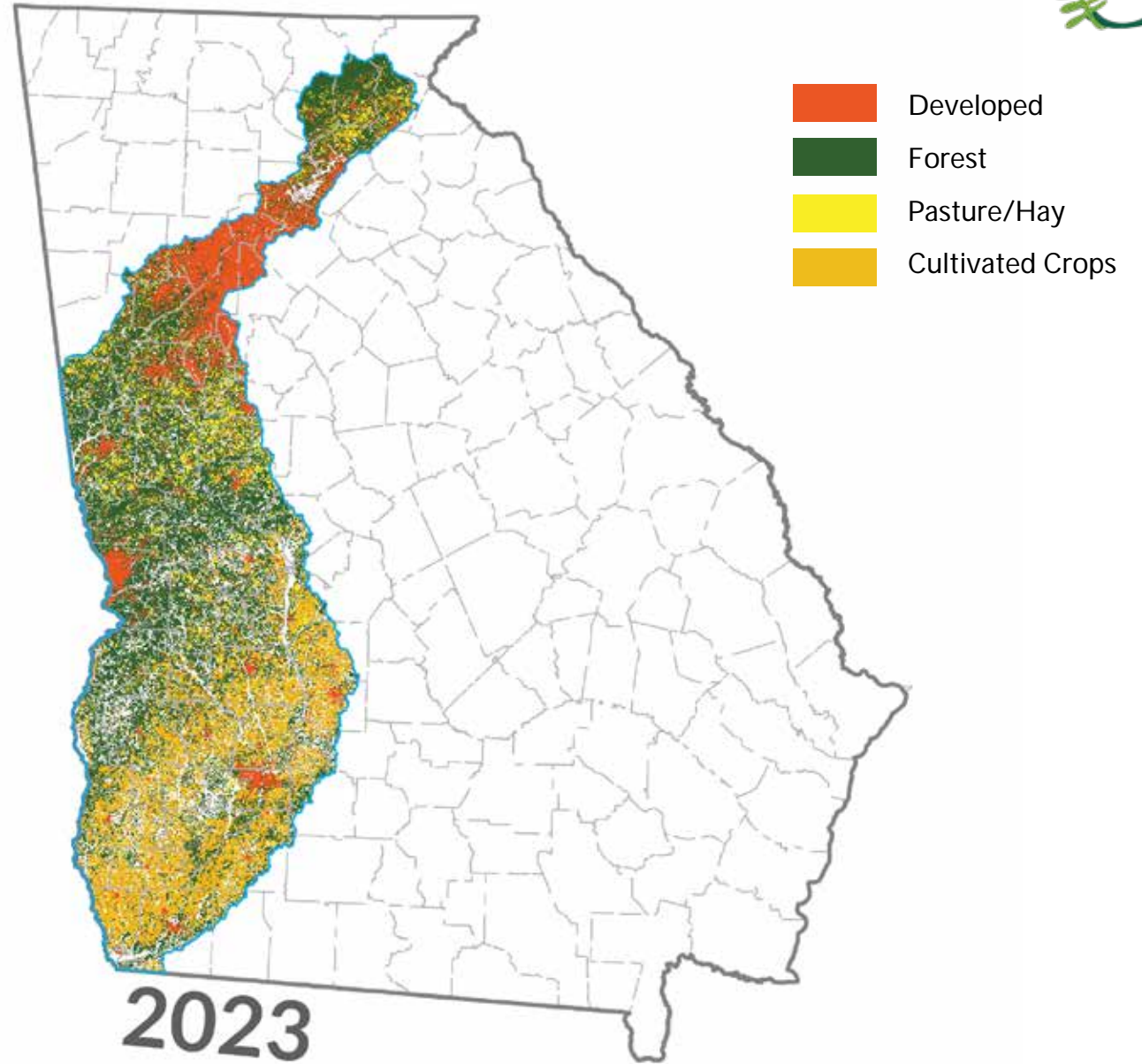


WHY PROTECT LAND?

We rely on our land for everything.

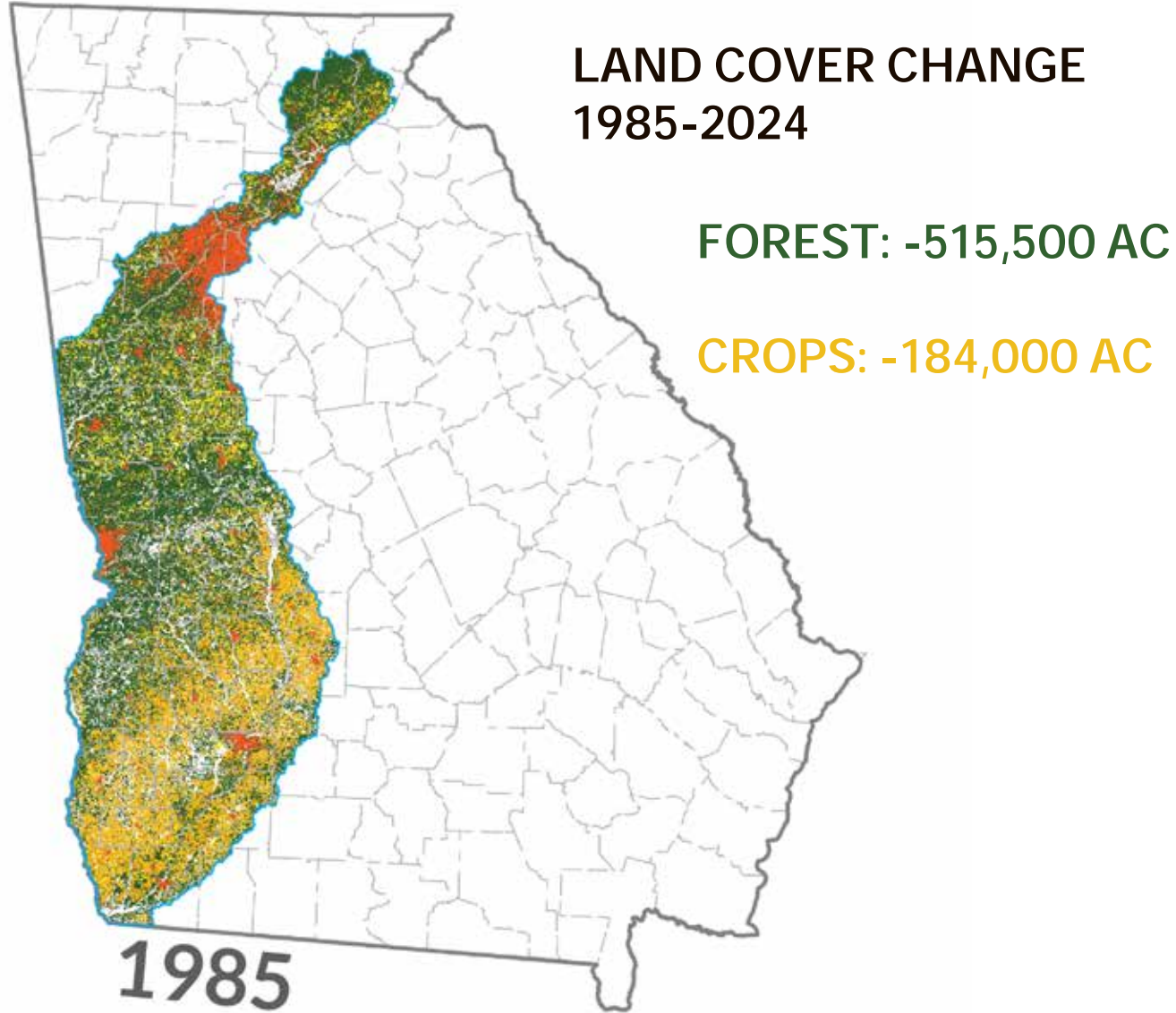
- Jobs & employment
- Housing & people
- Utilities & infrastructure
- Ecological services & habitat
- Outdoor recreation & natural resources

But our land is a limited resource.



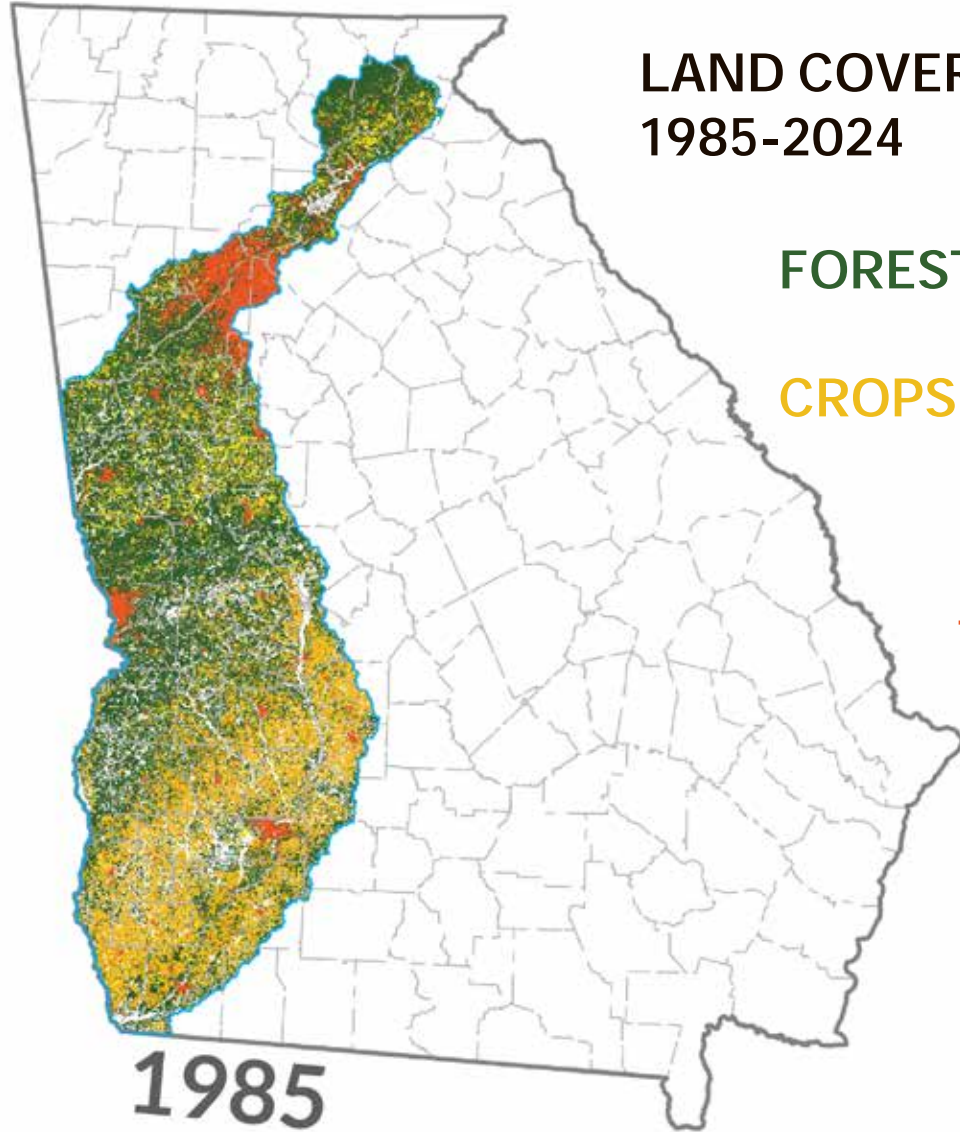


How is land in the ACF basin changing?





How is land in the ACF basin changing?

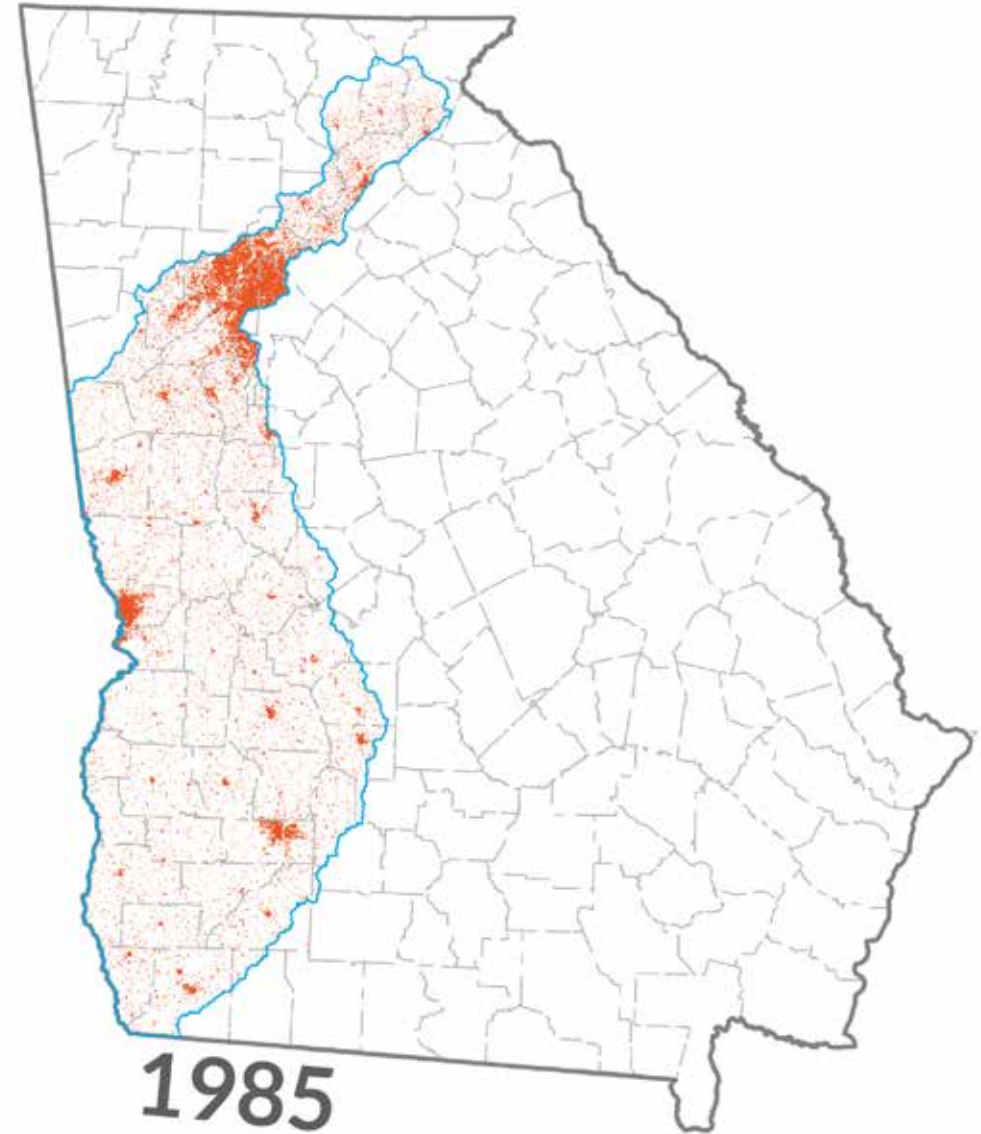


LAND COVER CHANGE
1985-2024

FOREST: -515,500 AC

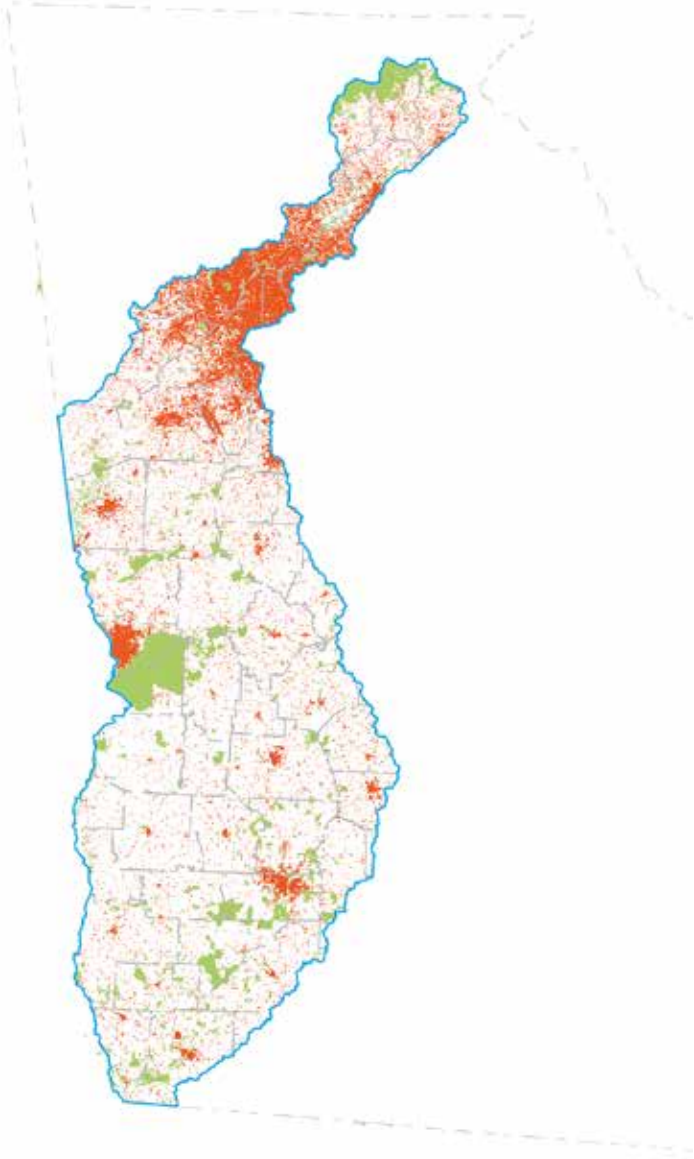
CROPS: -184,000 AC

DEVELOPMENT:
+446,500 AC





Which lands are protected?



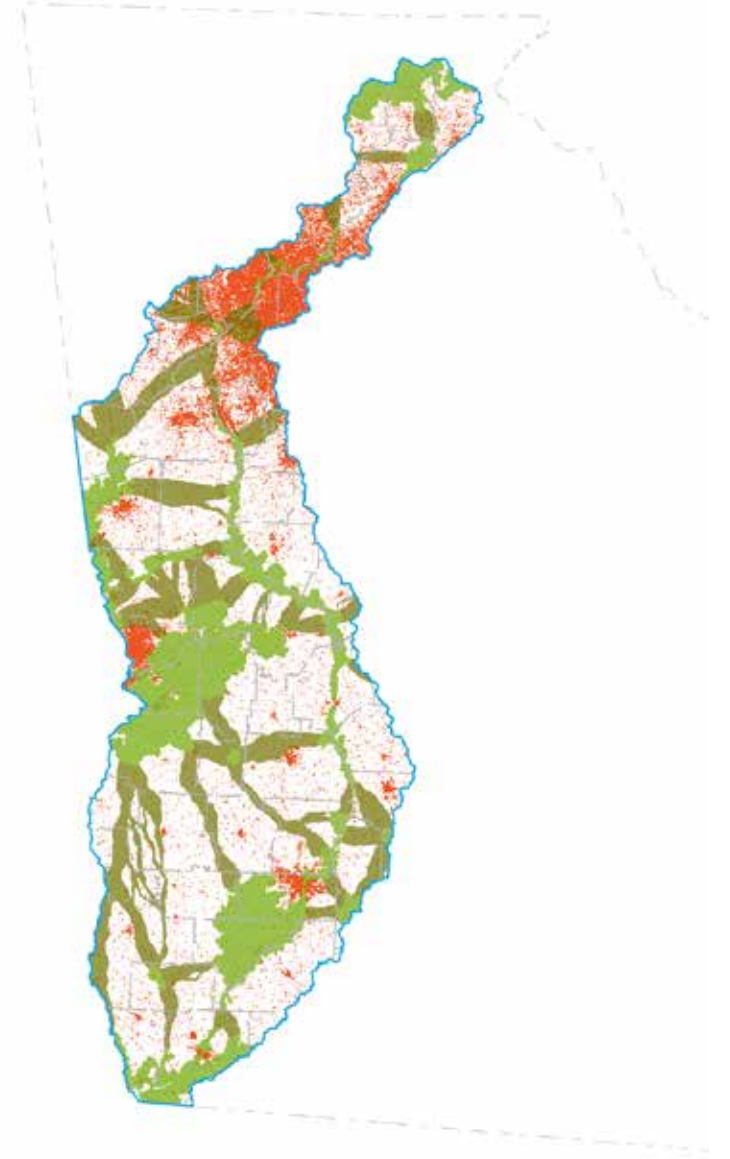
**DEVELOPMENT VS.
CONSERVED LANDS (2024)**

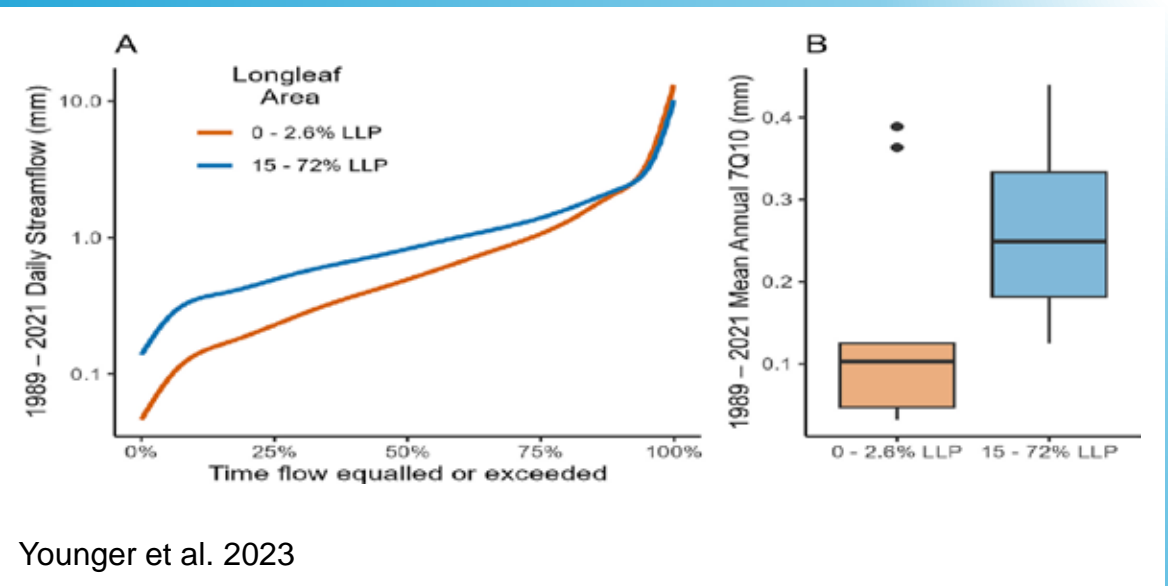
**~775,000 ACRES OF
PERMANENTLY CONSERVED
LANDS**

(170,000 AC = Fort Benning)

**DEVELOPMENT VS.
SWAP HUBS,
SWAP CORRIDORS**

**~334,000 ACRES OF
DEVELOPED LAND IN
SWAP CORRIDORS**





Younger et al. 2023





BMPs Work For All Types of True Forestry Operations

WATER QUALITY PROGRAM



GEORGIA'S
Best Management Practices
for Forestry

